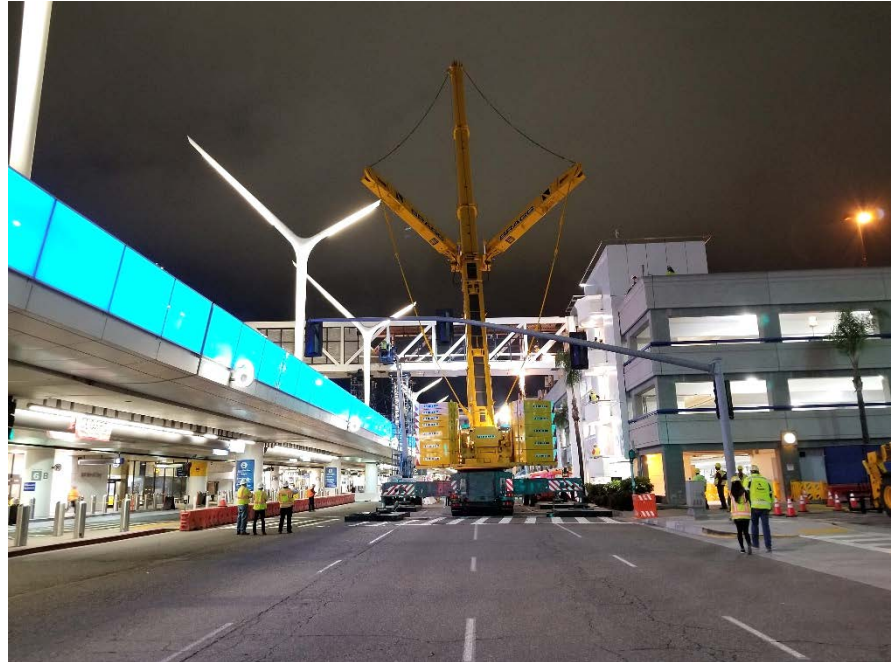


# Construction Hot Topics

Week of May 20 - 24, 2019

## 1. Terminal 6 / Parking Structure 6: Pedestrian Bridge Demolition

- The Pedestrian Bridge between Terminal 6 and Parking Structure 6 was demolished and removed from the Central Terminal Area last week
- All lanes have been restored and all Ground Transportation stops re-opened



**FLYLAX.com**

[@flyLAXairport](https://twitter.com/flyLAXairport)

[f LAInternationalAirport](https://www.facebook.com/LAInternationalAirport)

[@flyLAXairport](https://www.instagram.com/flyLAXairport)

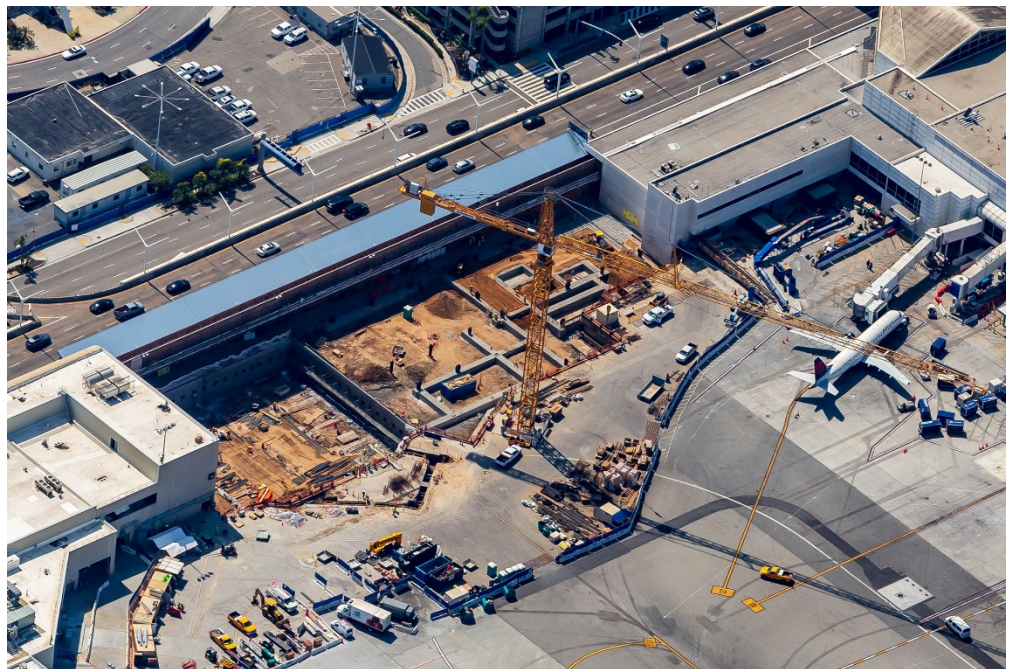
[Construction Hotline: 310 649 5292](tel:3106495292)

# Construction Hot Topics

Week of May 20 - 24, 2019

## 2. Terminal 1.5 Construction Progress

- The Terminal 1.5 construction project recently celebrated its next major milestone in starting steel erection (airside) for the future terminal
- Expected to open January 2021, the new facility will ease congestion between Terminals 1 and 2, both within ticketing and post-security screening



**FLYLAX.com**

[@flyLAXairport](https://twitter.com/flyLAXairport)

[f LAInternationalAirport](https://www.facebook.com/LAInternationalAirport)

[@flyLAXairport](https://www.instagram.com/flyLAXairport)

[Construction Hotline: 310 649 5292](tel:3106495292)