

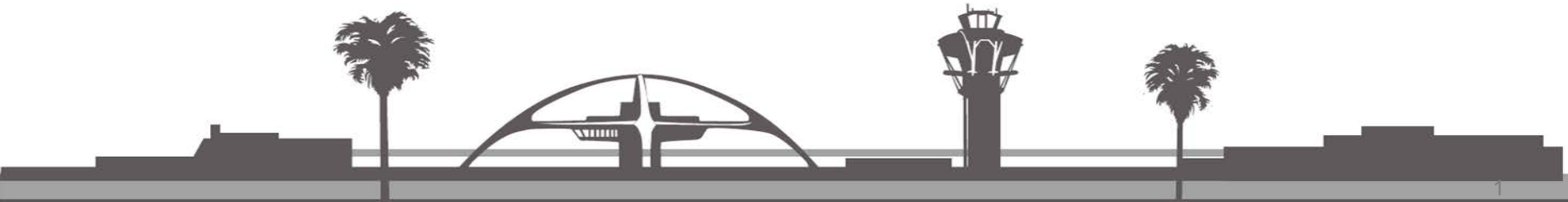


Los Angeles World Airports

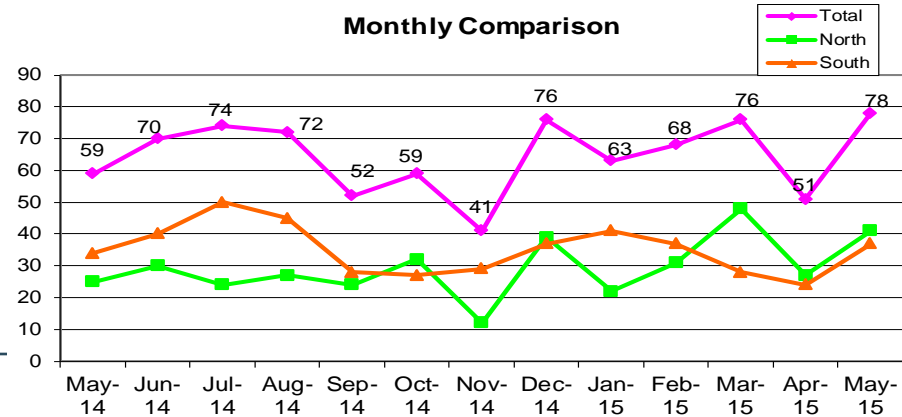
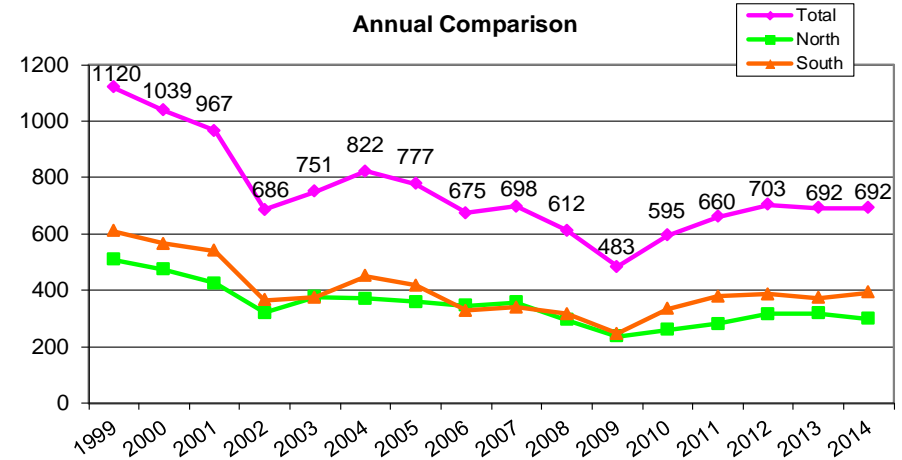
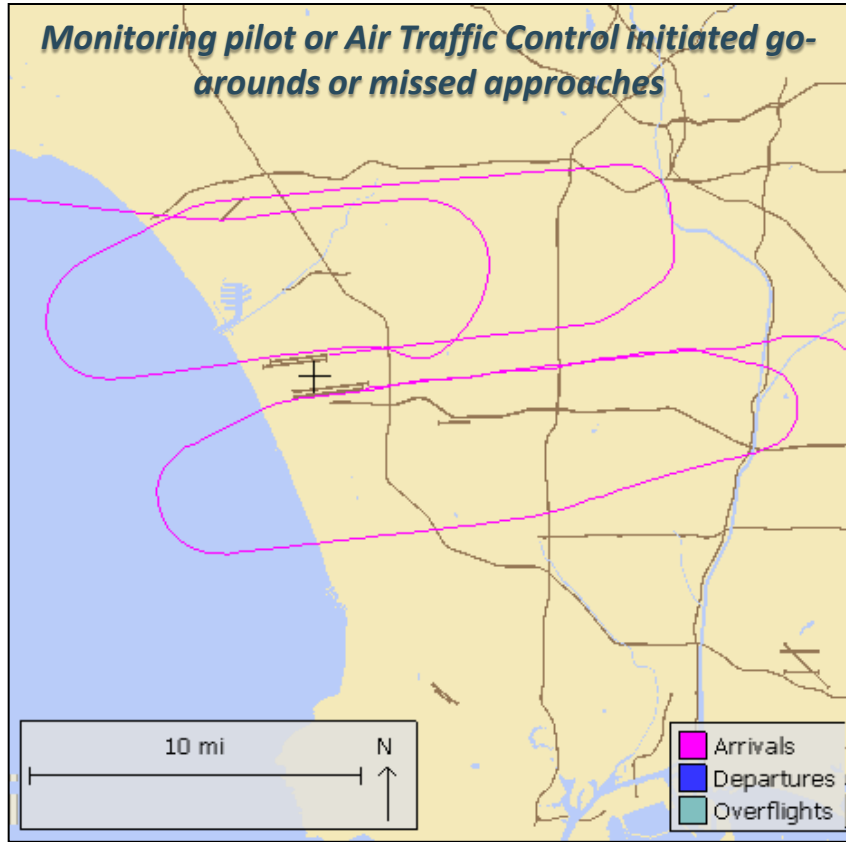


Runway Safety Area Improvement Projects and Related Operations

LAX/Community Noise Round Table
September 9, 2015



What is a Go-Around?

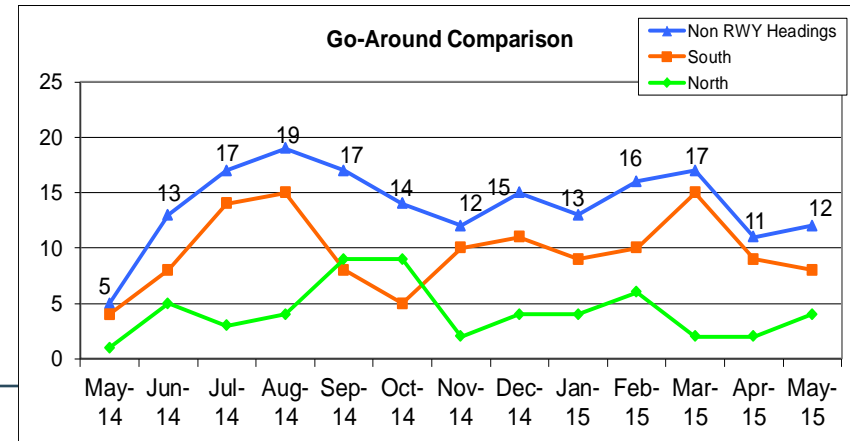
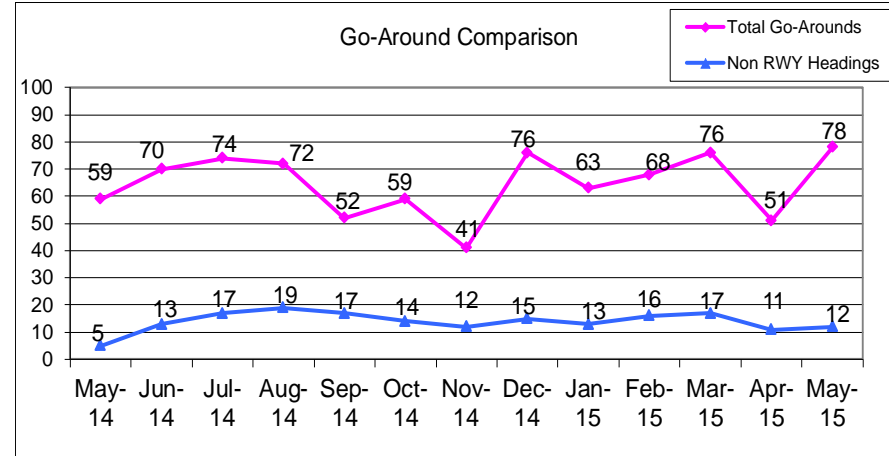
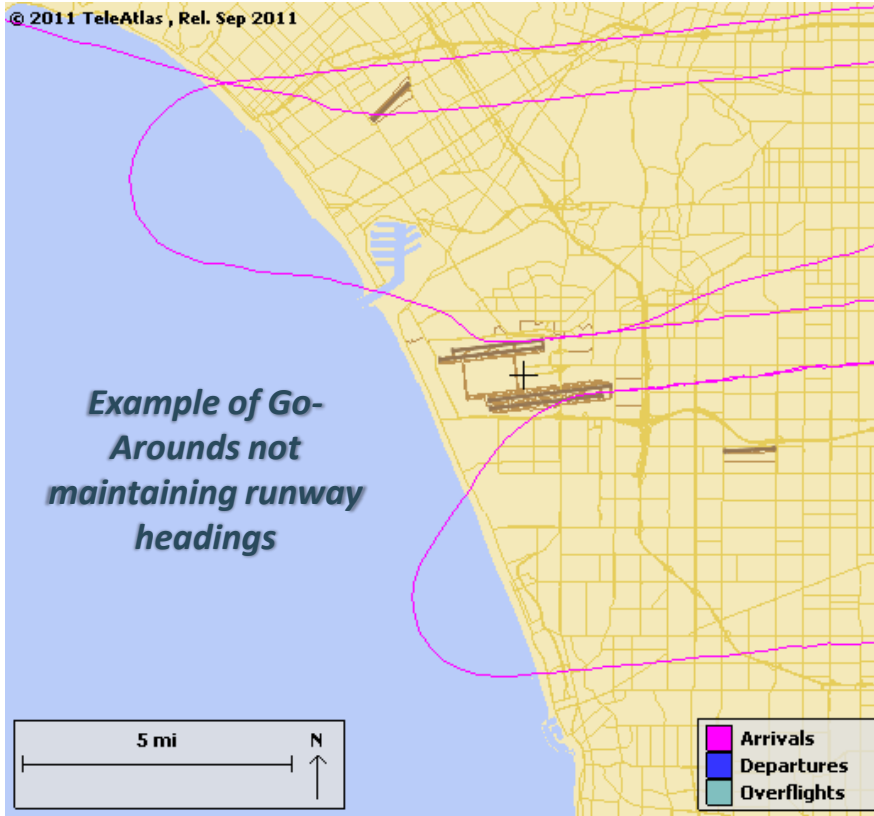


Why Go-Arounds Happen

	May 2015
Pilot Initiated	35
Too high or too fast	19
Weather	9
Aircraft Equipment (flaps, gears, avionics)	4
Ground Equipment (Nav aids, lighting, etc)	0
Other	0
Overtake on Final/ Wake Turbulence	1
Unknown	2
Controller Initiated	38
In-trail Spacing	25
Previous Arrival Traffic on Runway	8
Runway Crossing Traffic	2
Departure Traffic on Runway	3
Unknown	5
Total	78

Go-Arounds Not Maintaining Runway Headings

© 2011 TeleAtlas, Rel. Sep 2011



West Flow Operations at LAX – 4 Runways



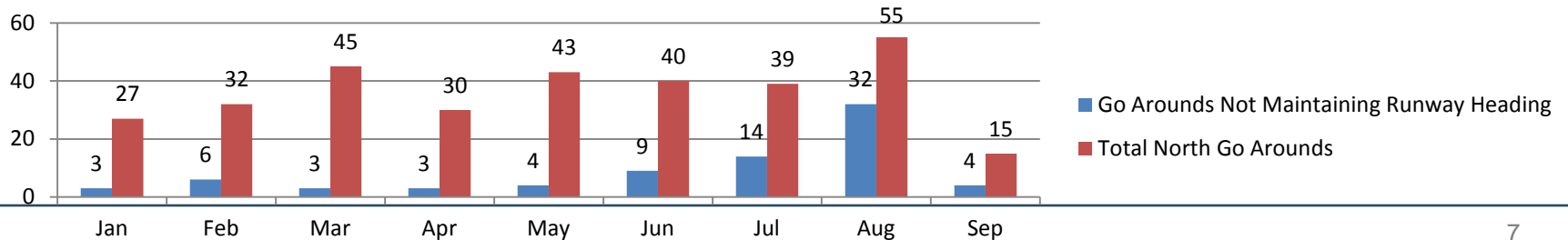
West Flow Operations at LAX – 3 Runways



Go-Arounds Pre- and Post- RSA Rwy 24R Closure

- 24L serving dual purpose
- Primary issue - traffic on runway
- Increase in % of Go-Arounds not maintaining runway heading

Month	Go Arounds Not Maintaining Runway Heading	Total North Go Arounds	% Not Maintaining Runway Heading
Jan	3	27	11%
Feb	6	32	19%
Mar	3	45	7%
Apr	3	30	10%
May	4	43	9%
Jun	9	40	23%
Pre RSA Subtotal	28	217	13%
Jul	14	39	36%
Aug	32	55	58%
Sep (Through 9/7)	4	15	27%
RSA Closure Subtotal	50	109	46%



Reasons for North Go-Arounds – July/Aug 2015

Reason	North Community Overflight	Total North Go-Arounds
2 Aircraft Holding At Taxiway AA	1	1
Aircraft Configuration/Too High and/or Fast	3	20
Aircraft Equipment/Flaps/Gear/Emergency		2
AMX645 was slow to roll runway 24L	1	1
Departure Traffic on Runway	31	38
Dog On Runway		2
Fod on the Runway		1
Ground Equipment		2
Intrail Spacing	3	7
Previous Arrival Traffic on Runway	4	10
Unknown	1	1
Unstable Approach	1	3
Wake Turbulence		1
Weather-Low Visibility, Low Ceiling, Fog, etc.	1	3
Wind/Windshear		2
Grand Total	46	94

Runway Use Statistics

Departures

Month	Runway Complex	
	South	North
Apr-15	56%	44%
May-15	60%	40%
Jun-15	59%	41%
Jul-15	64%	36%
Aug-15	63%	37%

Arrivals

Month	Runway Complex	
	South	North
Apr-15	44%	56%
May-15	50%	50%
Jun-15	52%	48%
Jul-15	58%	42%
Aug-15	58%	42%

Runway Use Statistics – North Complex

Departures

Month	Inboard Runway 24L/06R	Outboard Runway 24R/06L	North Complex Total
Apr-15	43%	1%	44%
May-15	39%	1%	40%
Jun-15	39%	2%	41%
Jul-15	36%	0%	36%
Aug-15	37%	0%	37%

Arrivals

Month	Inboard Runway 24L/06R	Outboard Runway 24R/06L	North Complex Total
Apr-15	6%	50%	56%
May-15	5%	45%	50%
Jun-15	5%	43%	48%
Jul-15	42%	0%	42%
Aug-15	42%	0%	42%