



Statistical Update on LAX Aircraft Operations

July 13, 2011

LAX/Community Noise Roundtable



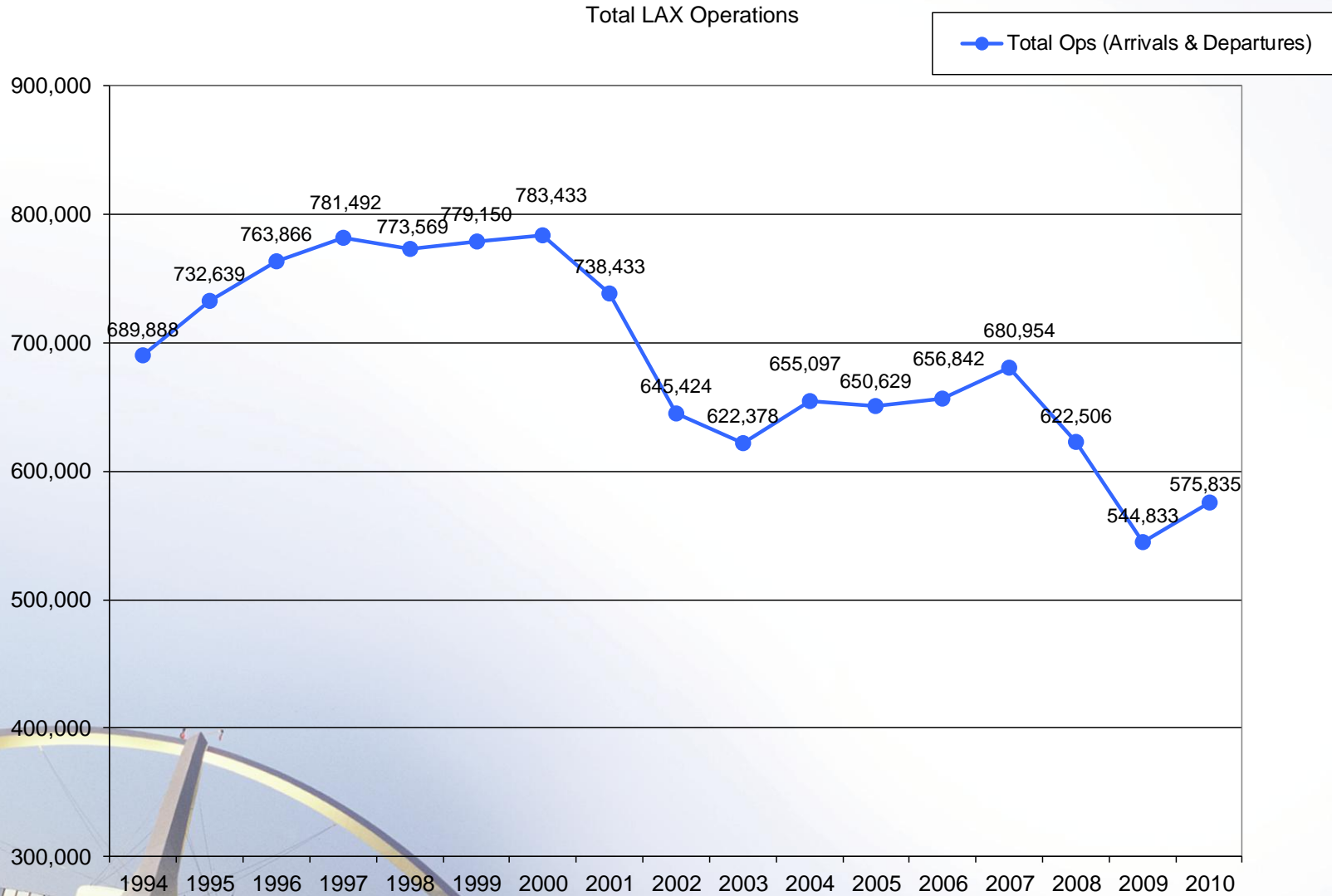
Overview

Statistical information on the following operations:

- East Departures
- Early Turns
- Go-arounds

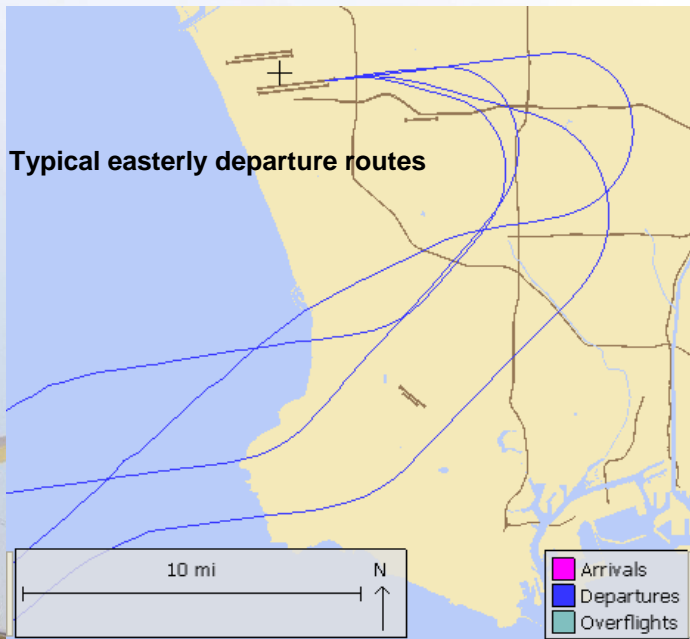


Total Operations Comparison

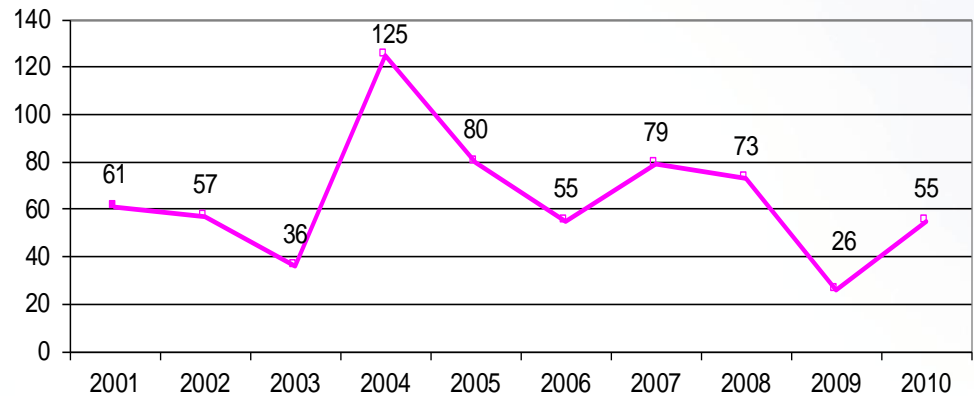


Non-Conforming East Departures Midnight to 6:30 AM

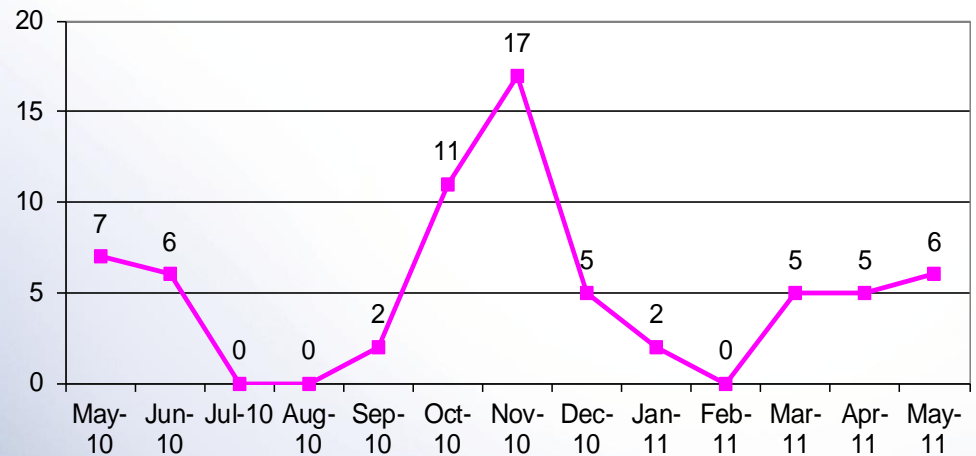
This report shows a summary of aircraft operations that depart to the east while the airport is still conducting westerly departures between midnight and 6:30 a.m. These individual easterly departures usually occur when the pilot of a heavy aircraft (e.g. B747s) determines that the tail wind is too great for the weight of the aircraft and requests to depart east into the wind for aircraft safety.



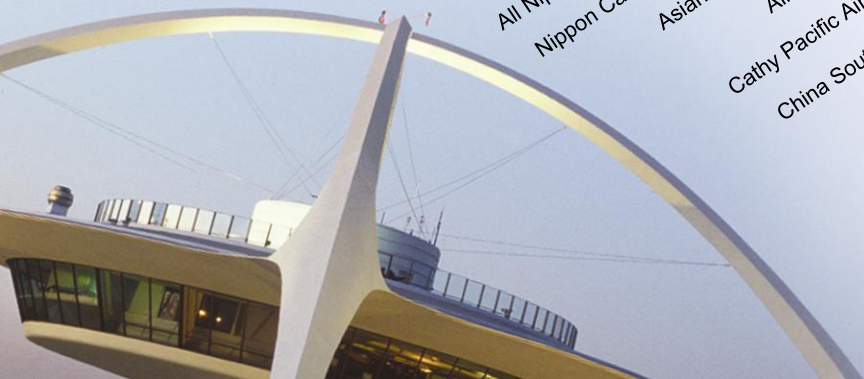
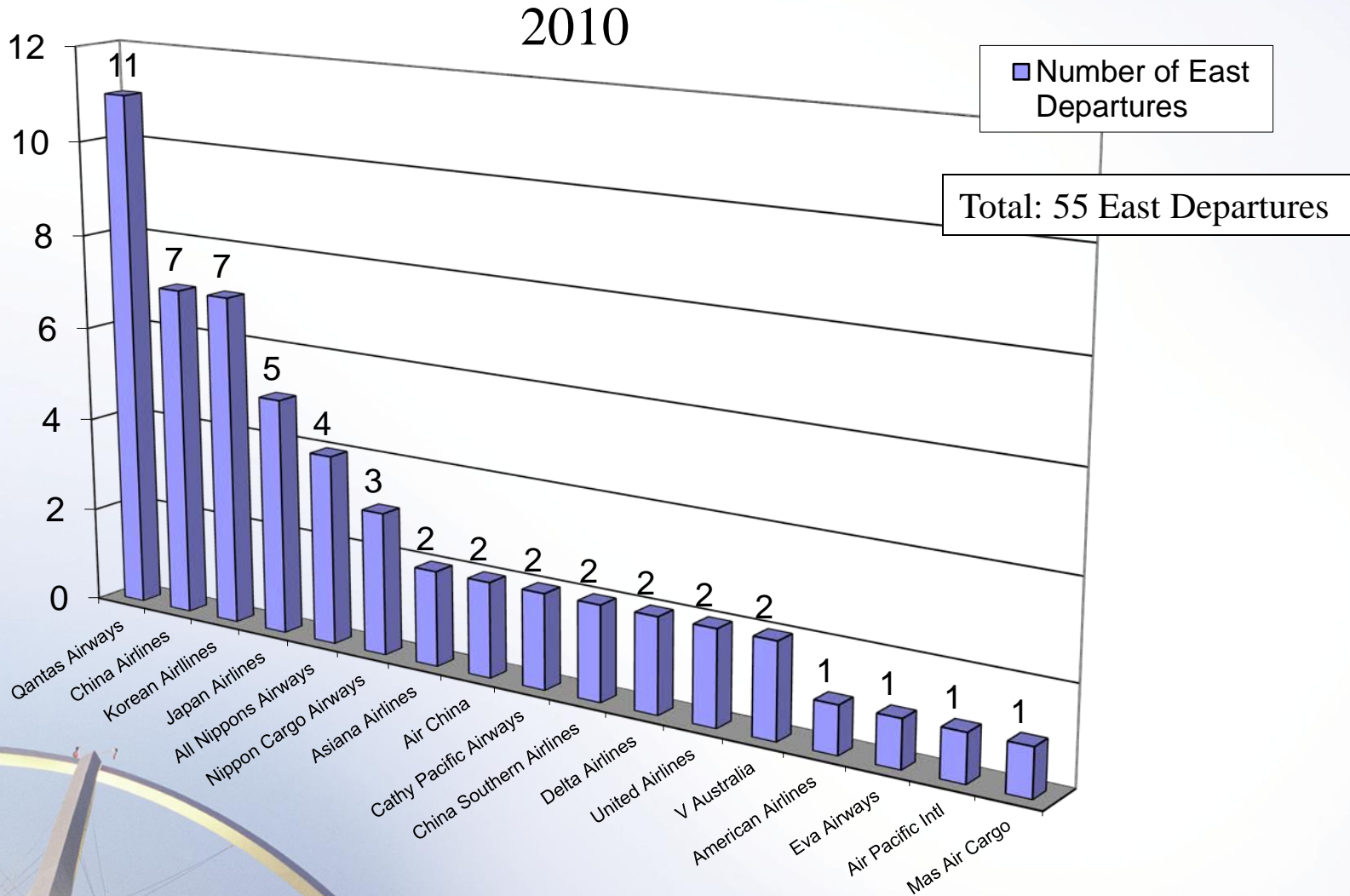
Annual Comparison



Monthly Comparison

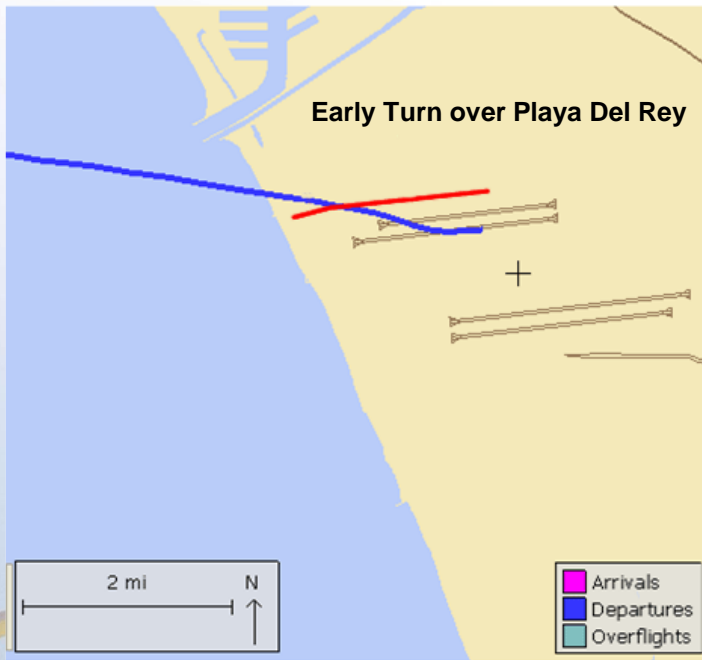


Non-Conforming East Departures by Operators Midnight to 6:30 AM

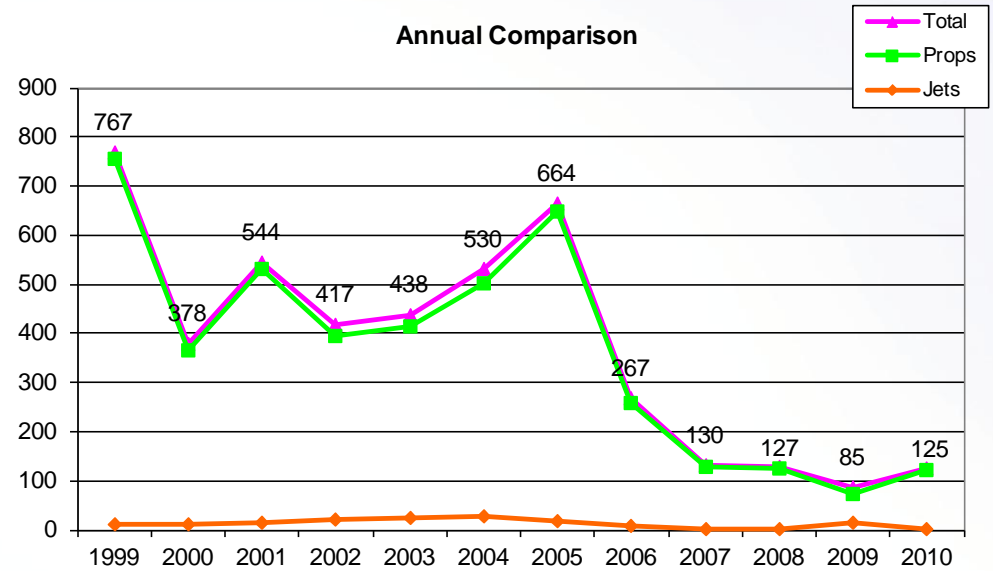


Early Turn to the North

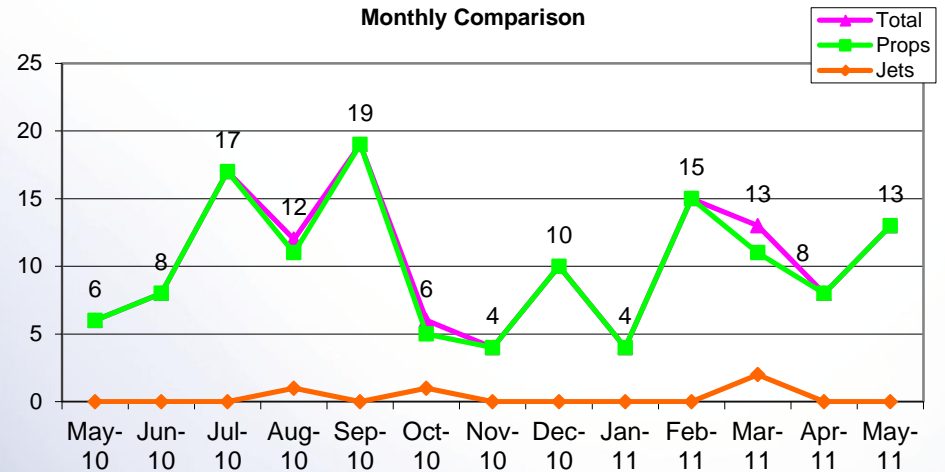
Aircraft departing to the ocean turn early prior to reaching the shoreline



Annual Comparison

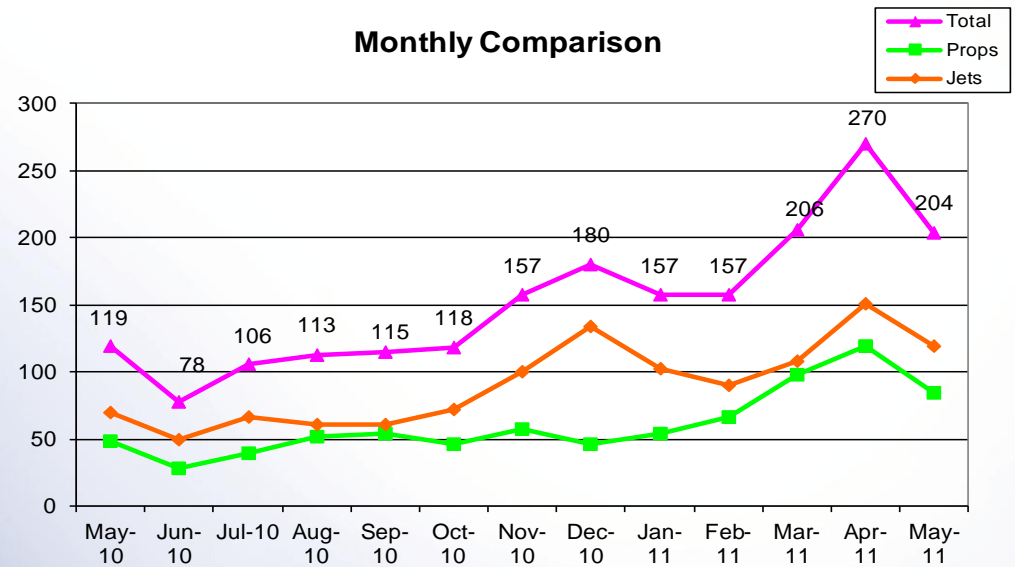
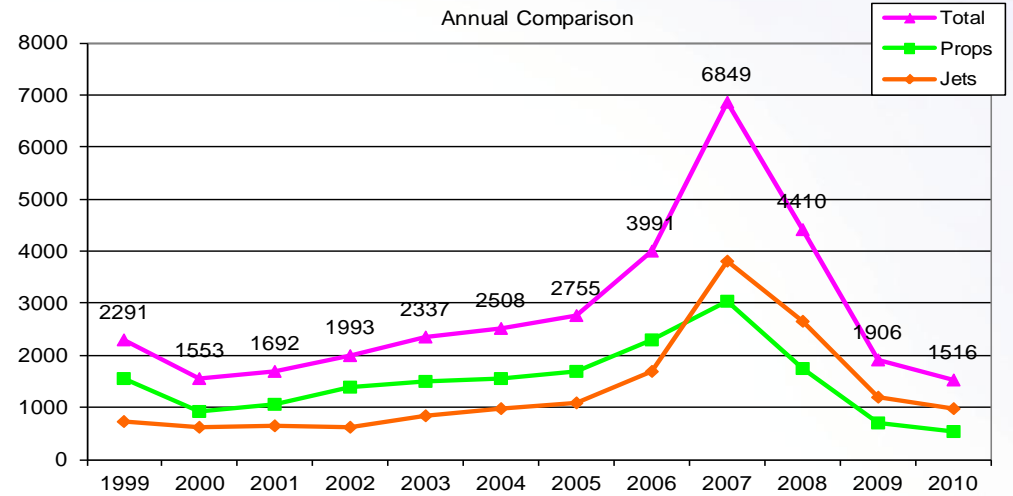
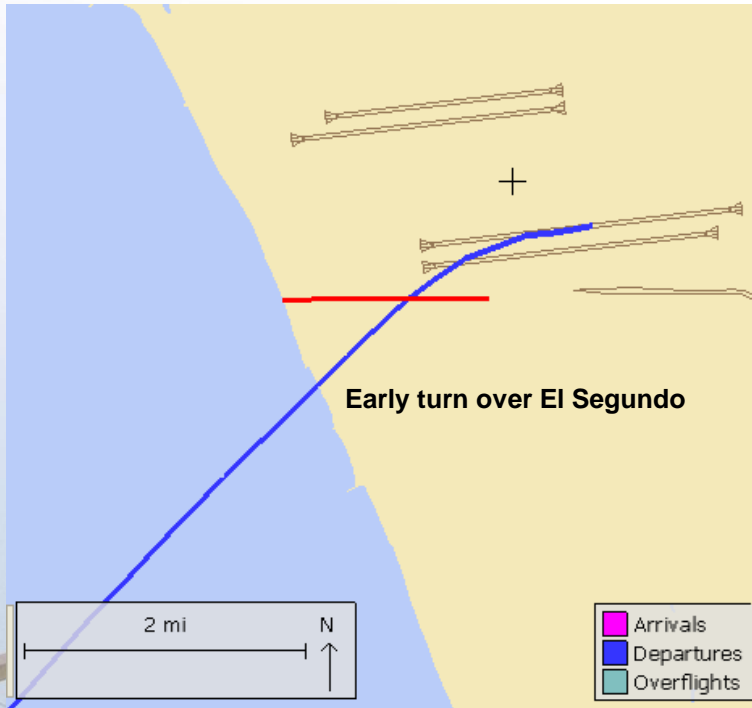


Monthly Comparison



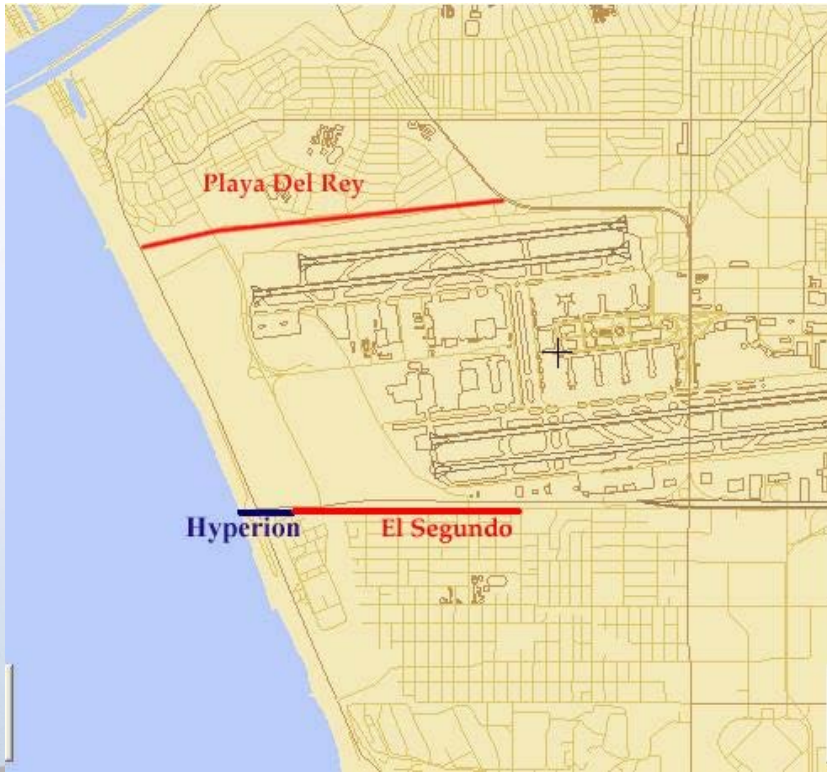
Early Turn to the South

Aircraft departing to the ocean turn early prior to reaching the shoreline



Early Turns Breakdown

April 2011



Total Early Turn Ops	278
Hyperion Gate	215
El Segundo Gate	55
Playa Del Rey Gate	8

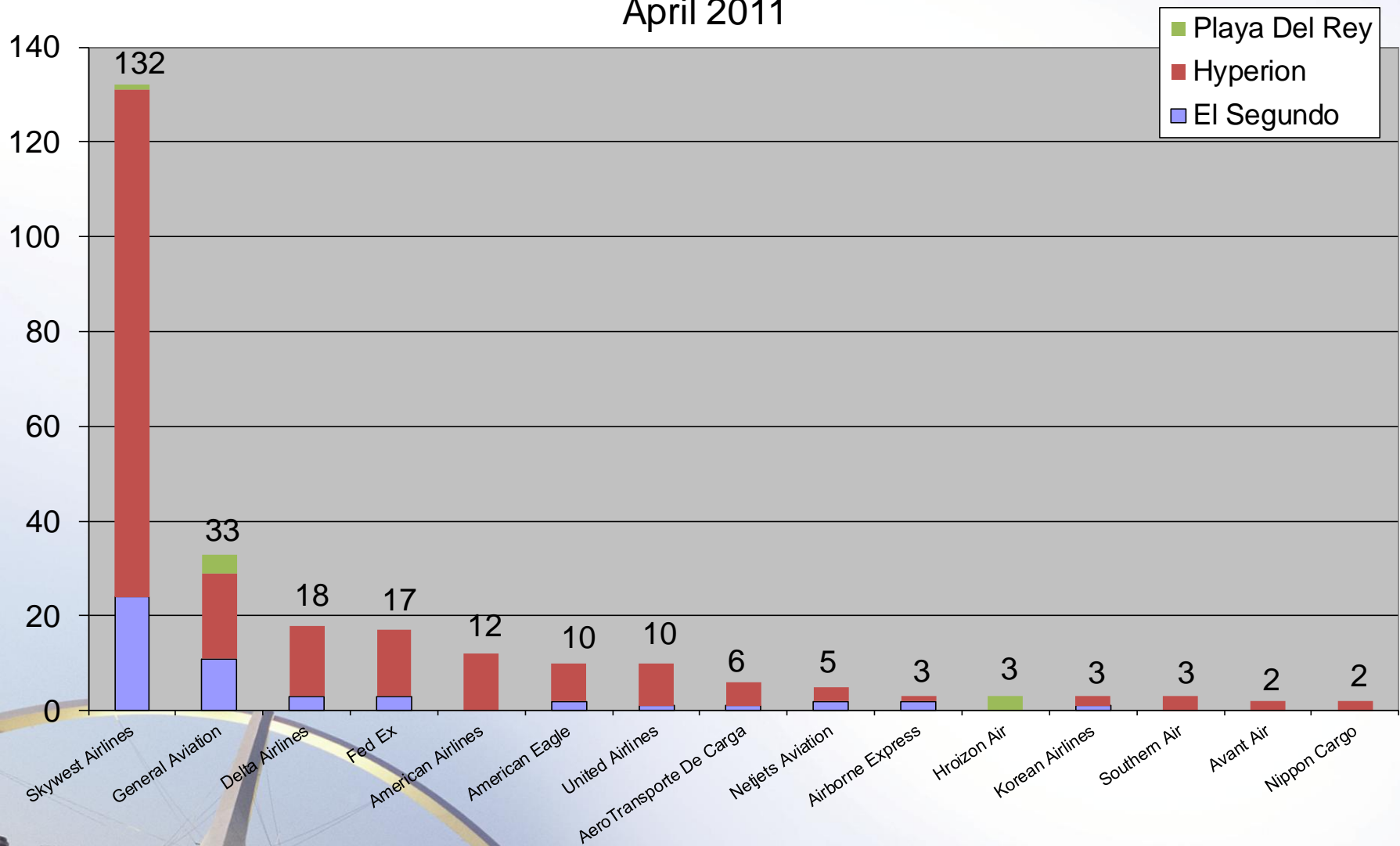
Result of Investigation	
Total	63
FAA instructed	29
Pilot initiated	33
Wind drift	1

April 2011	South	North
Departure	15241	9207
Early Turn	270	8
% Ratio	1.77%	0.0009%



Early Turns by Operators

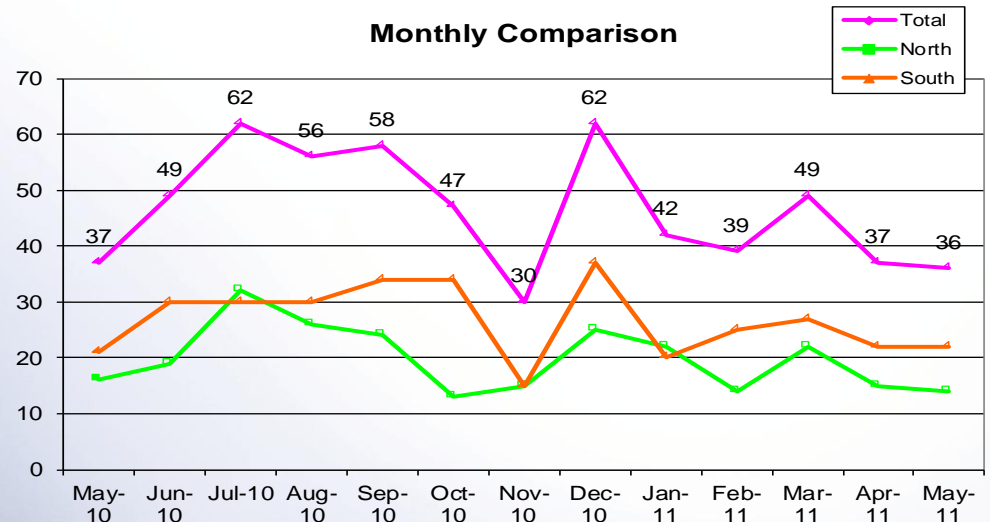
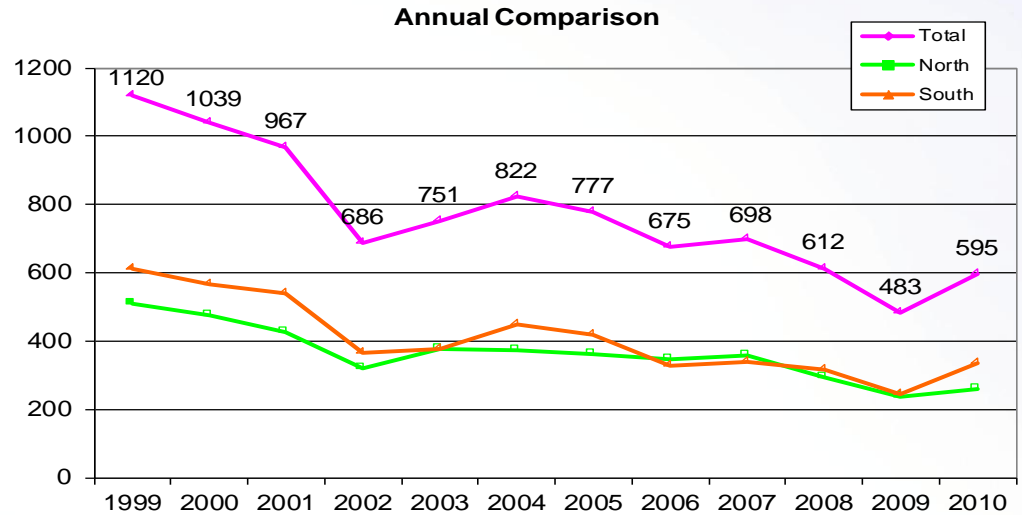
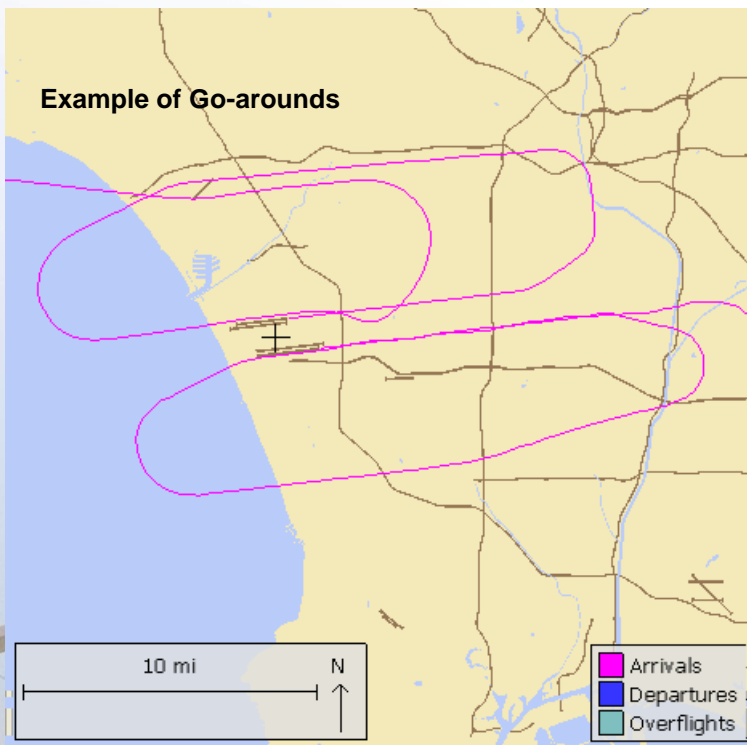
April 2011



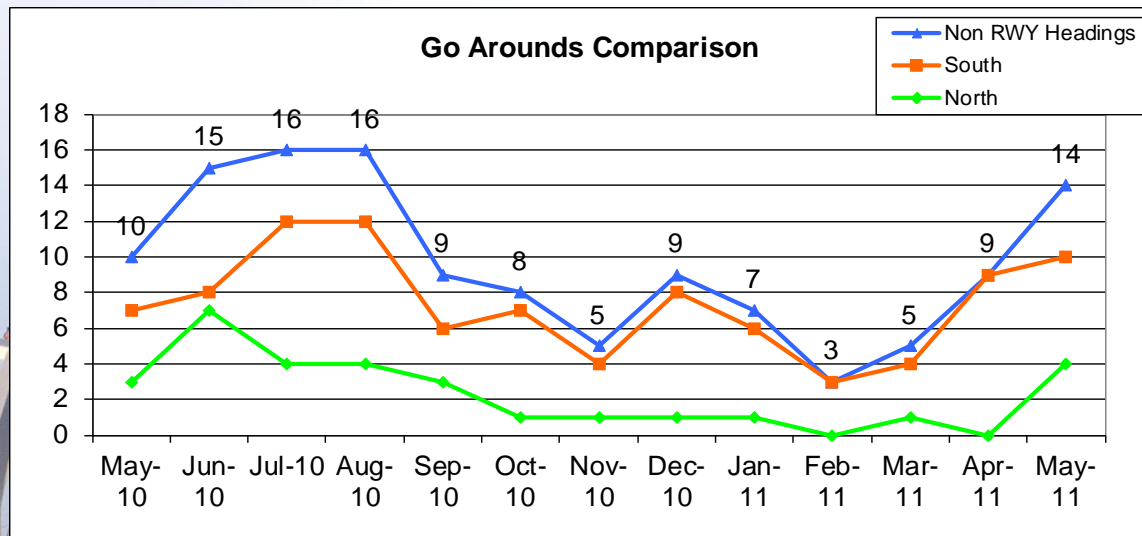
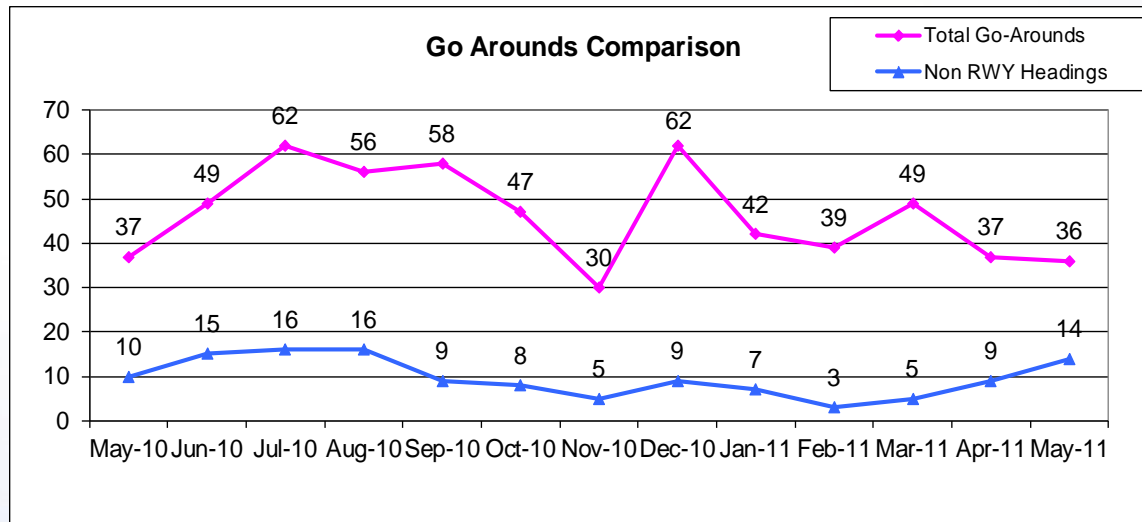
Note: 19 other operators (each with one early turn) not included in this graph.

Go-Arounds

Monitoring pilot or ATC initiated go-arounds or missed approaches



Go-Arounds – Not Maintaining RWY Headings



Go-Arounds – By Operators

