



Statistical Update on Aircraft Operations

November 12, 2014

LAX/Community Noise Roundtable

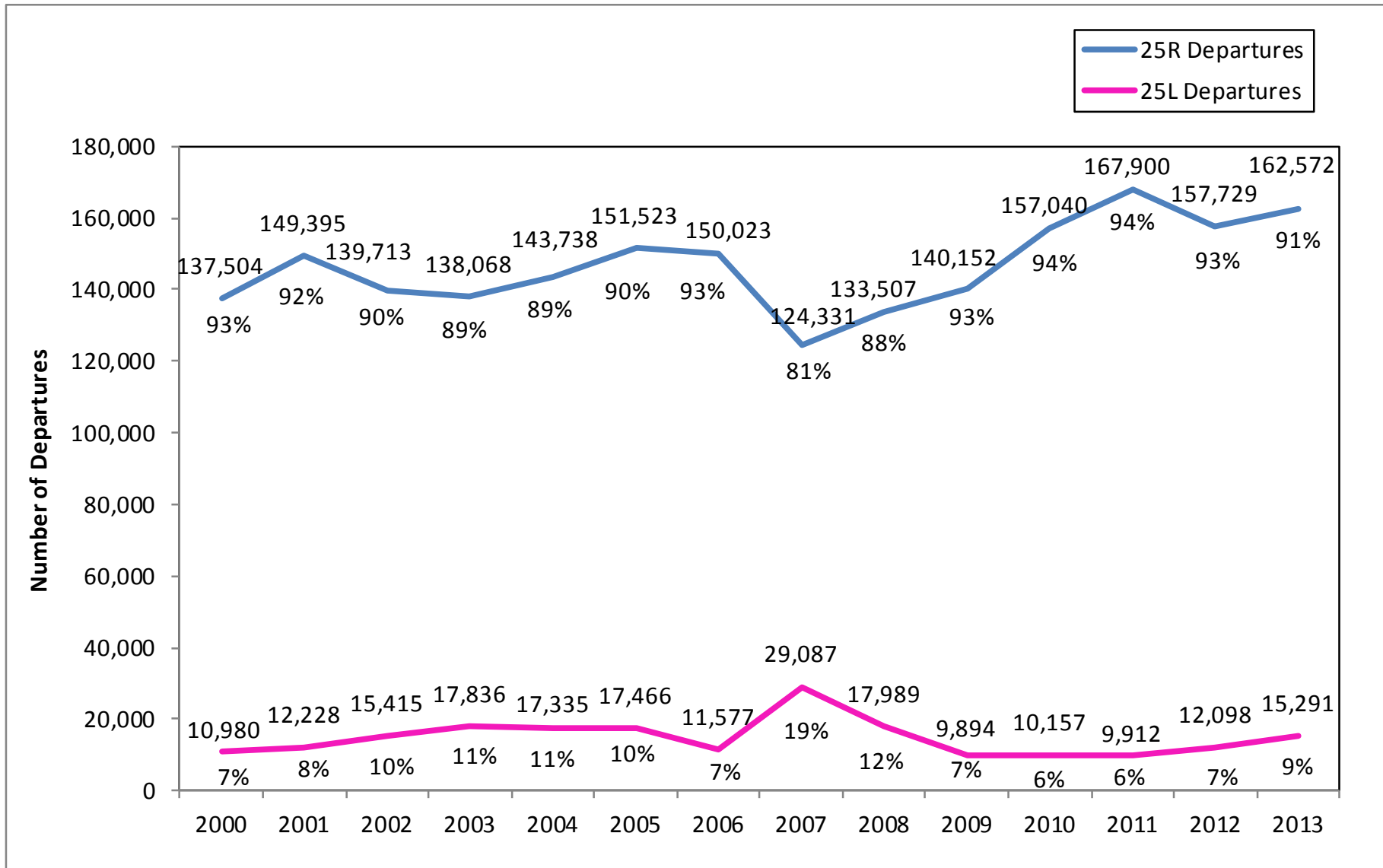
Overview

Statistical information on the following operations:

- 25L Departures
- Palos Verdes Overflights

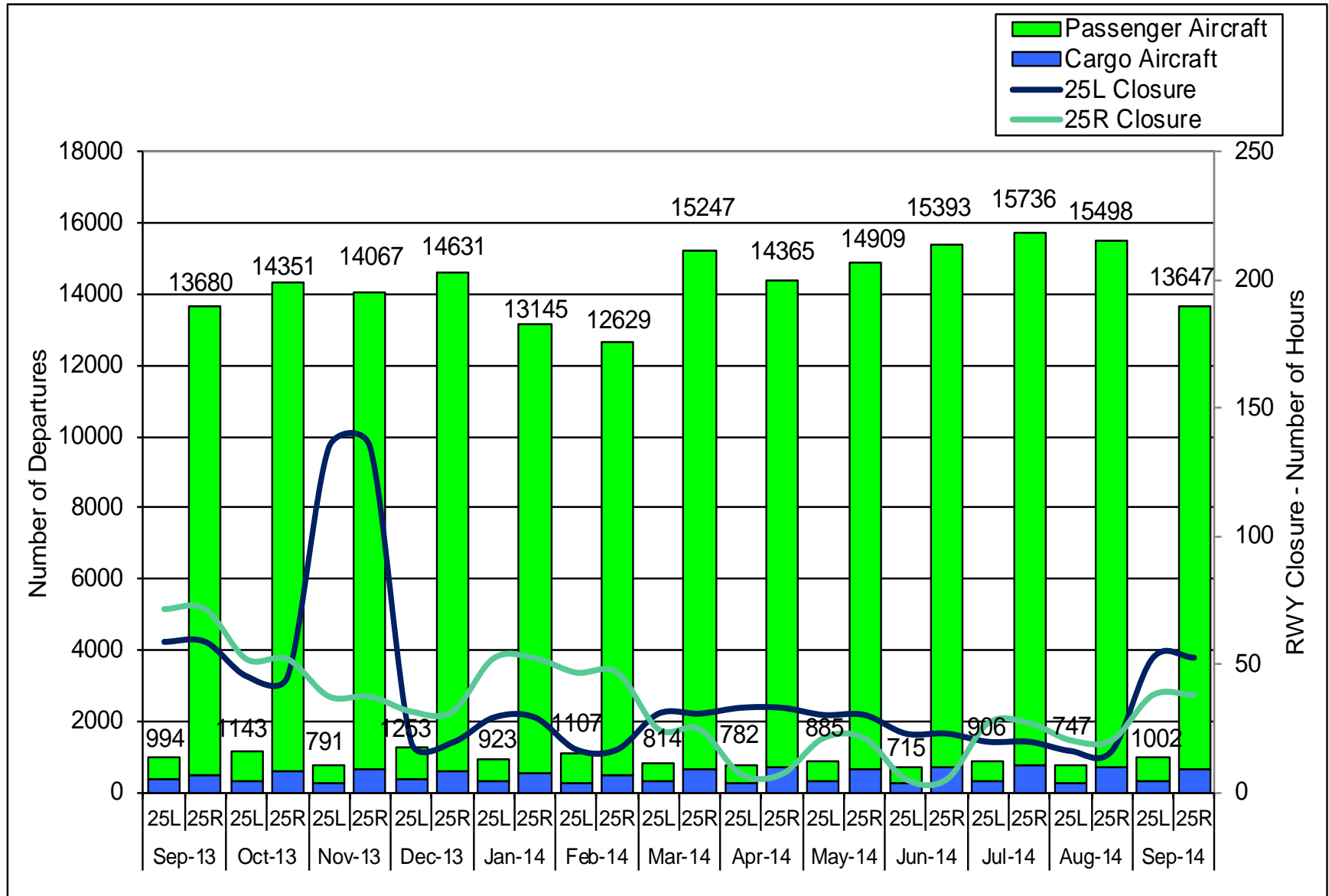
Departures – Runways 25L and 25R

Annual Comparison

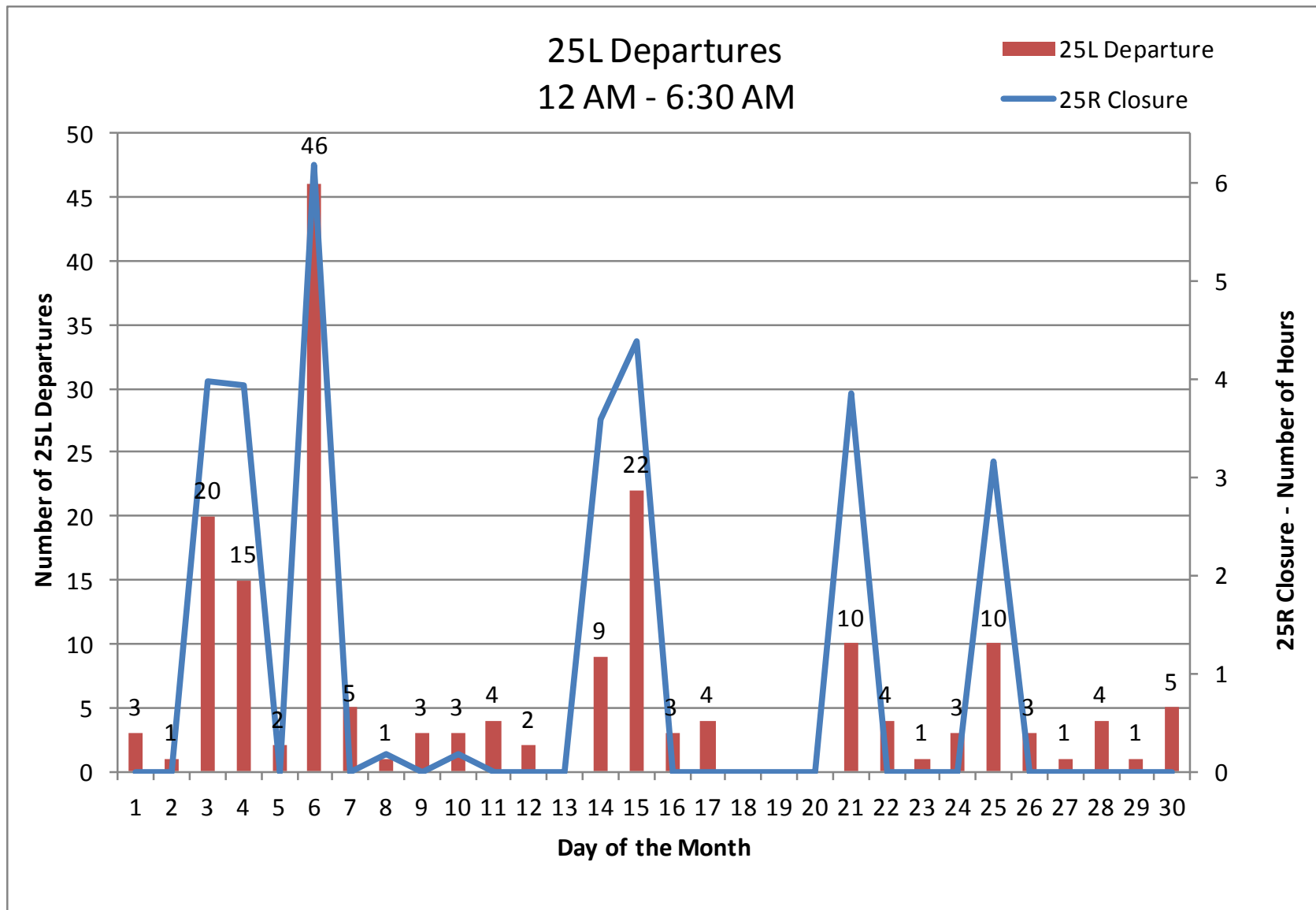


Departures – Runways 25L and 25R

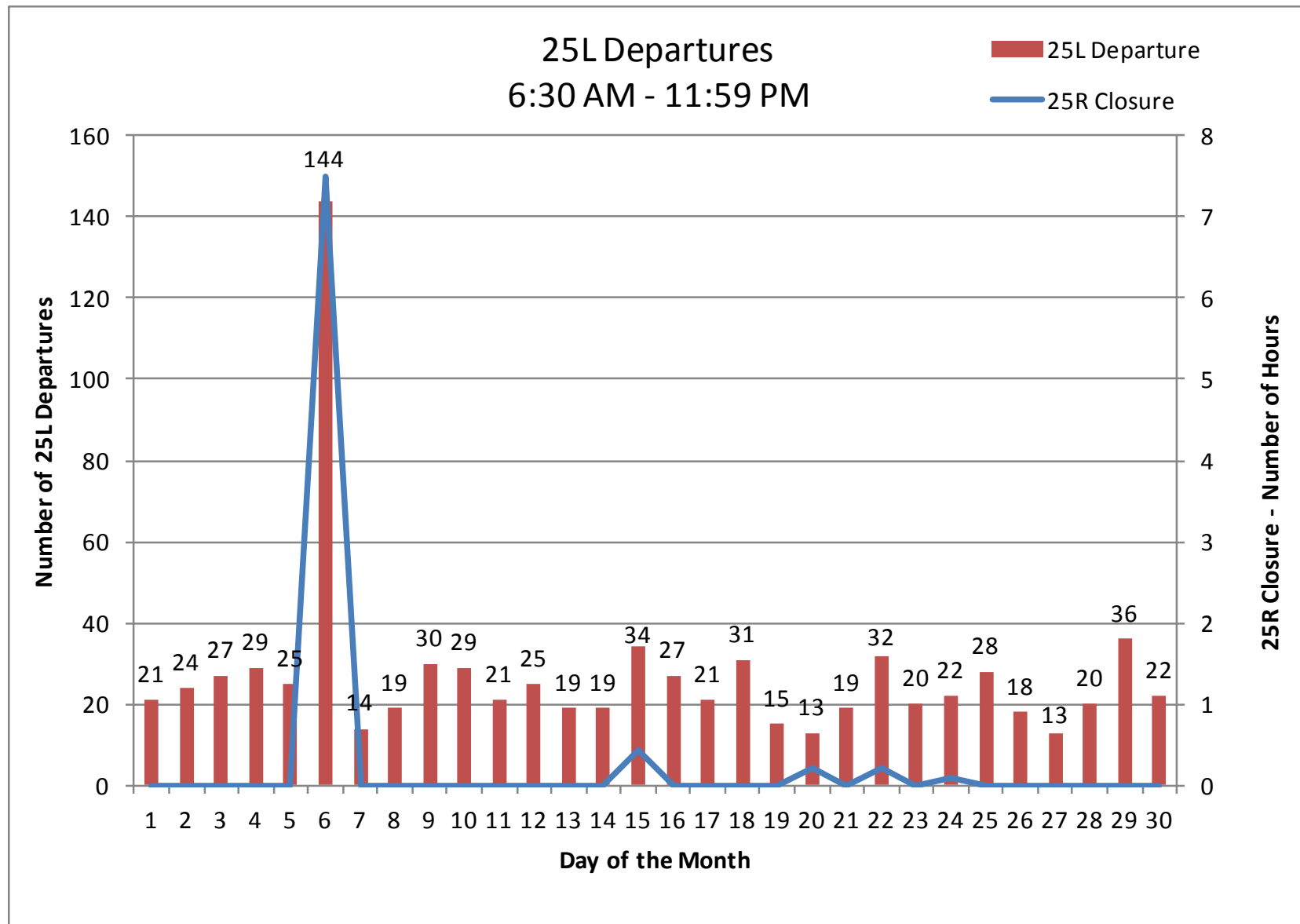
13-month period



25L Departures September 2014

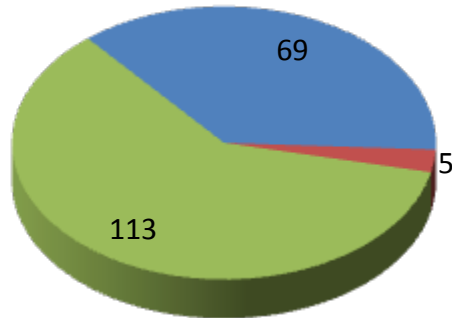


25L Departures September 2014



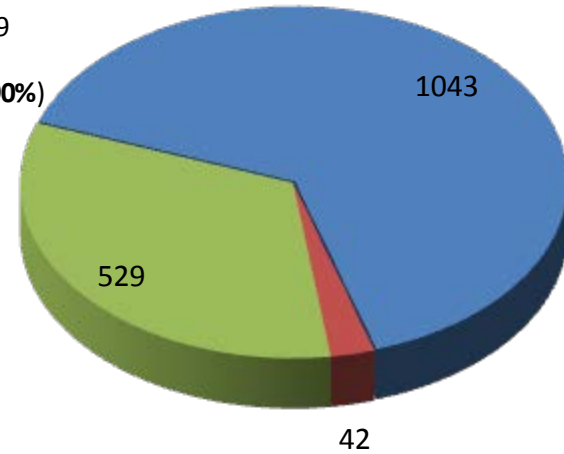
Departures by Operator Type September 2014

**25L Departures
12AM - 6:30 AM**



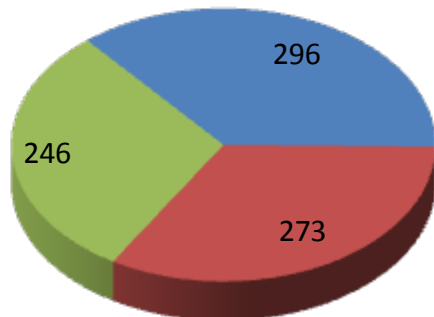
■ PAX - 69
■ GA - 5
■ Cargo - 113
Total: 187 (10%)

**25R Departures
12 AM - 6:30 AM**



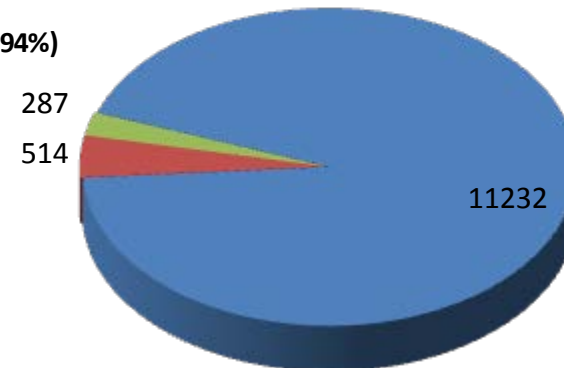
■ PAX - 1043
■ GA - 42
■ Cargo - 529
Total: 1614 (90%)

**25L Departures
6:30 AM - 11:59 PM**



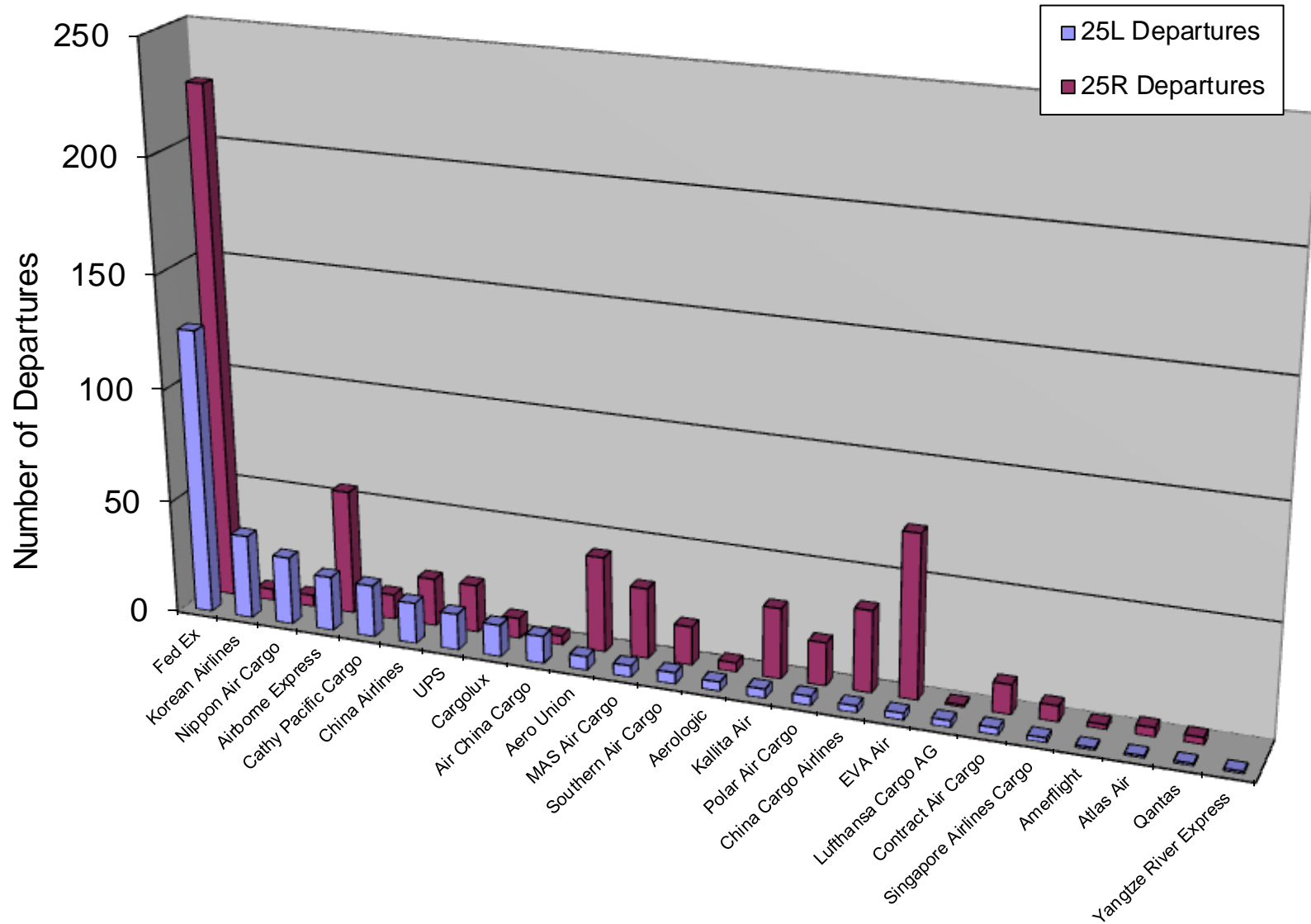
■ PAX - 296
■ GA - 273
■ Cargo - 246
Total: 815 (6%)

**25R Departures
6:30 AM - 11:59 PM**

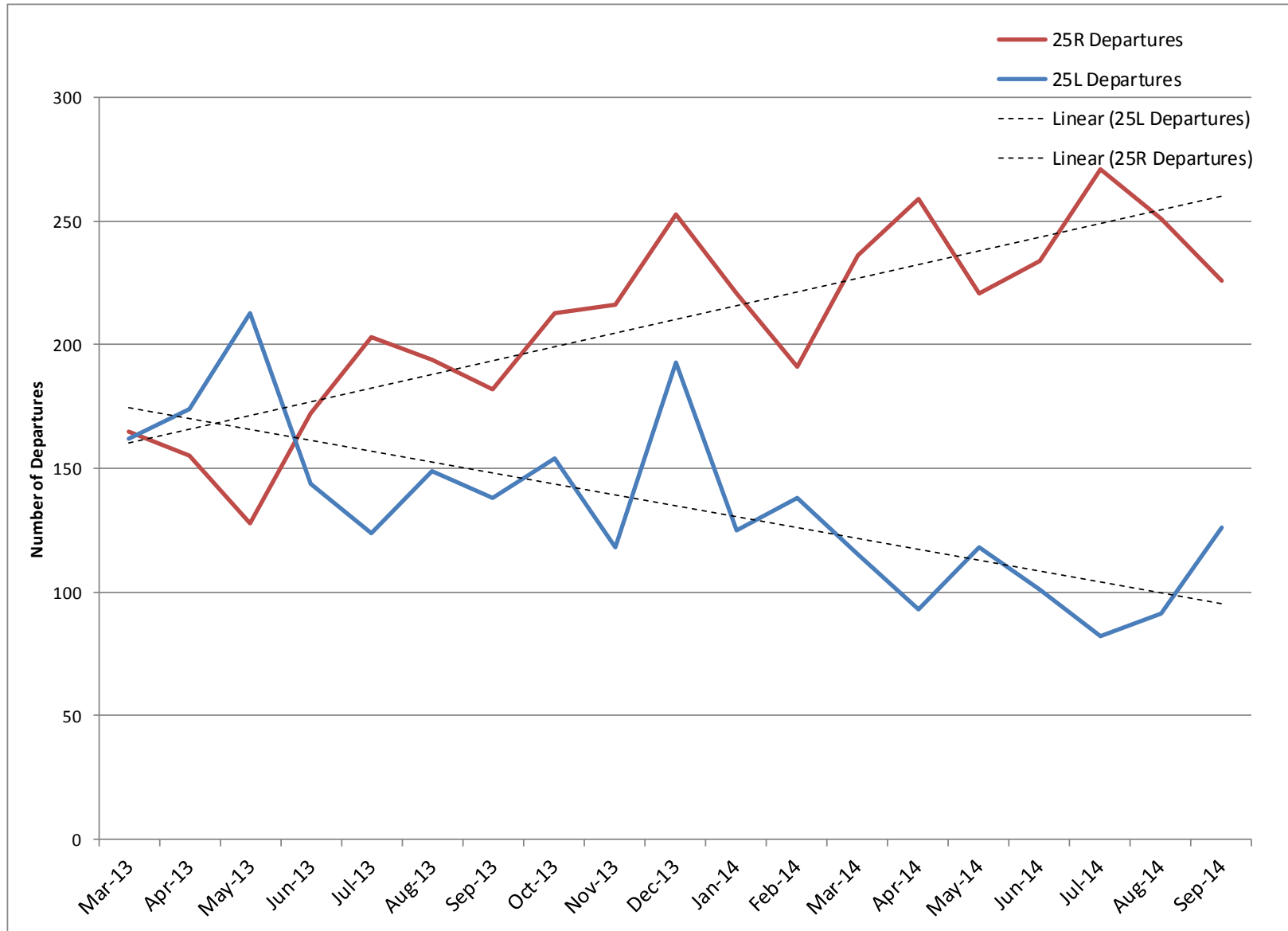


■ PAX - 11232
■ GA - 514
■ Cargo - 287
Total: 12033 (94%)

Cargo Departures on 25L & 25R by Operator September 2014

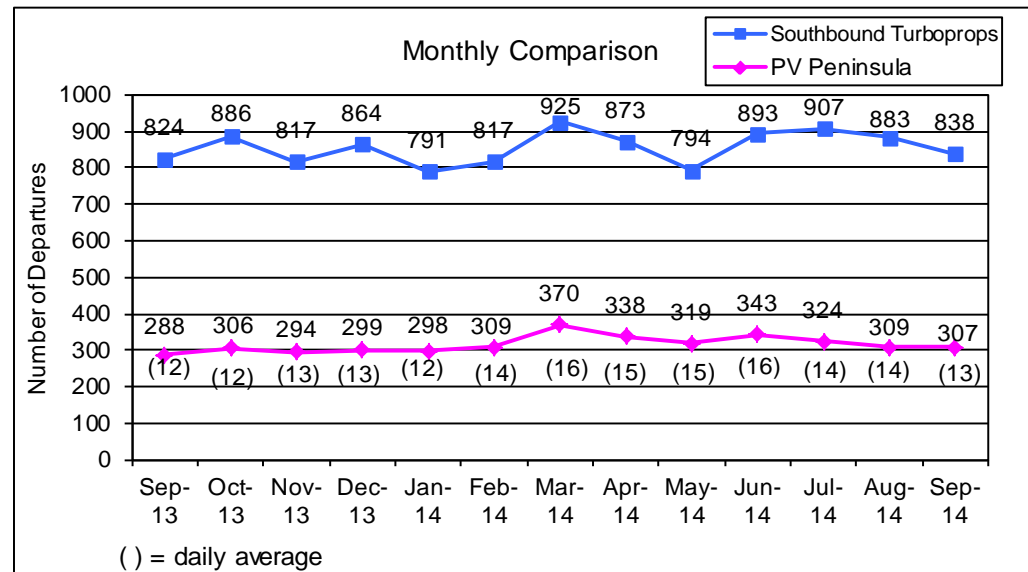
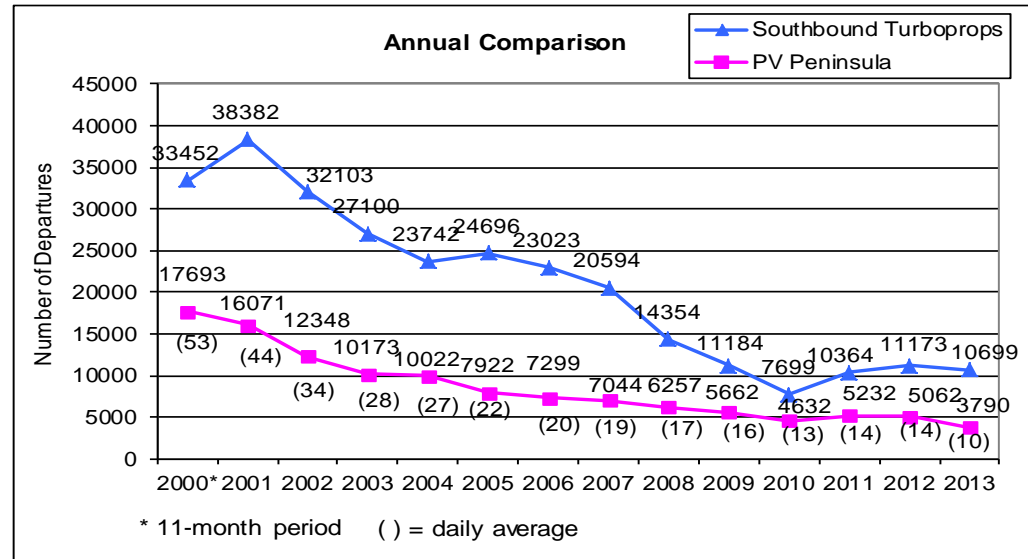
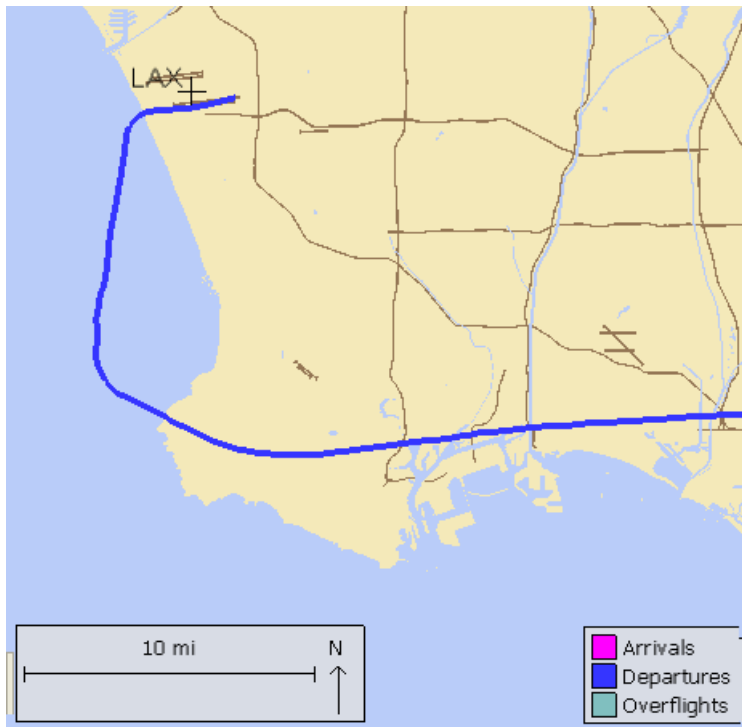


Fed Ex Departures on 25L & 25R 19-month period

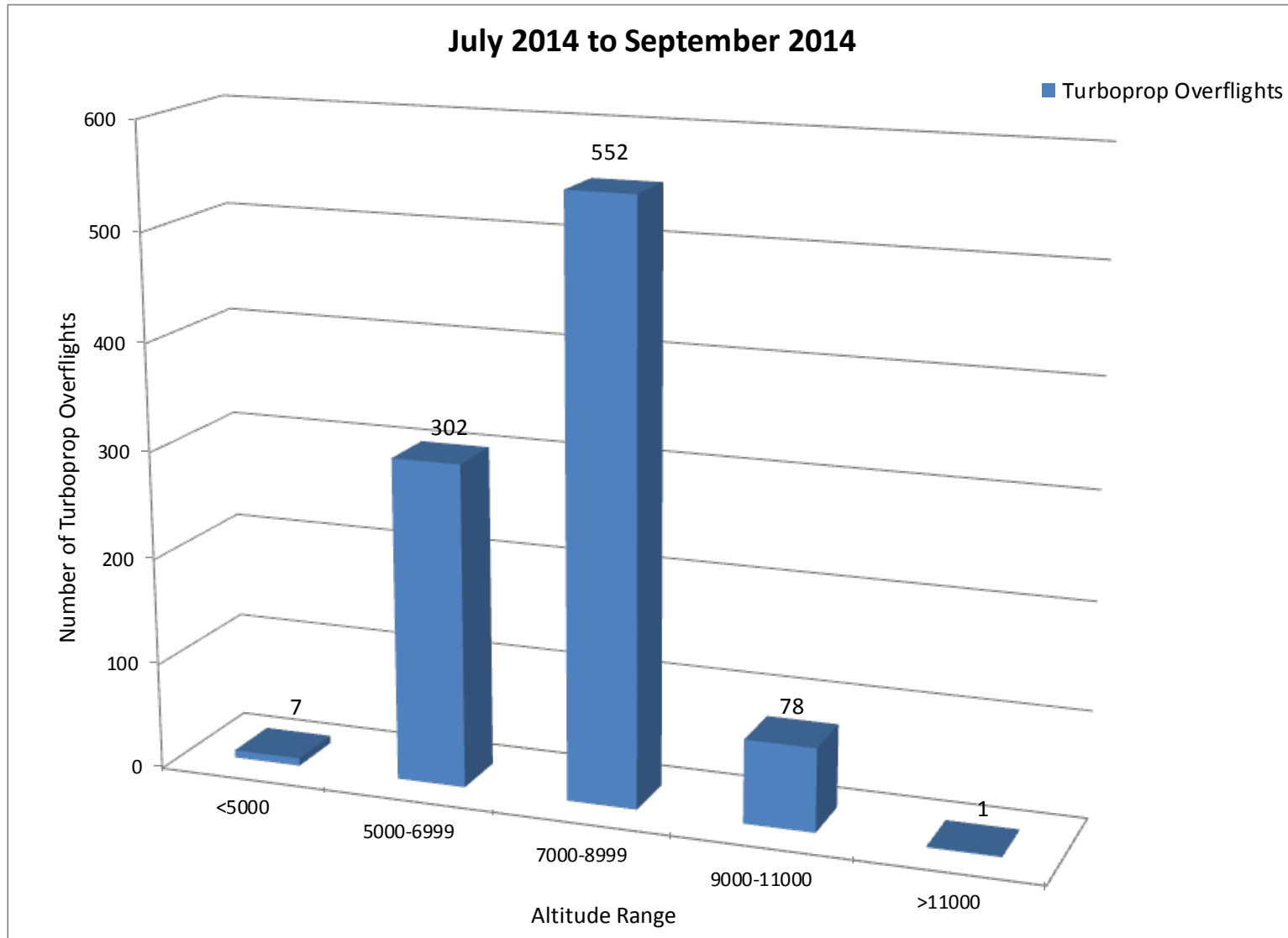


Palos Verdes Peninsula – Turboprop Overflights

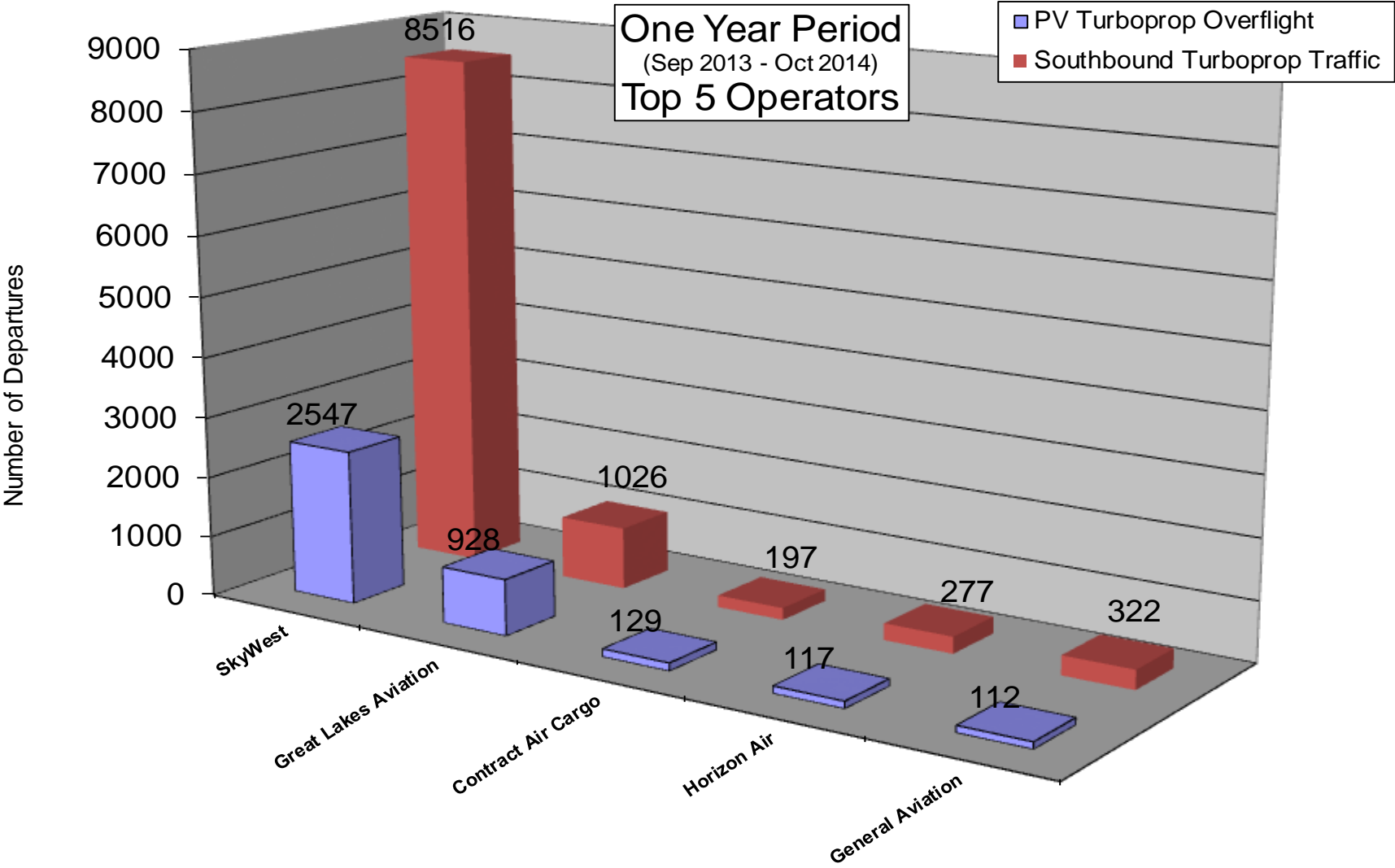
Monitoring southbound turboprops departing from LAX that overfly Peninsula



Turboprop Altitudes over PV

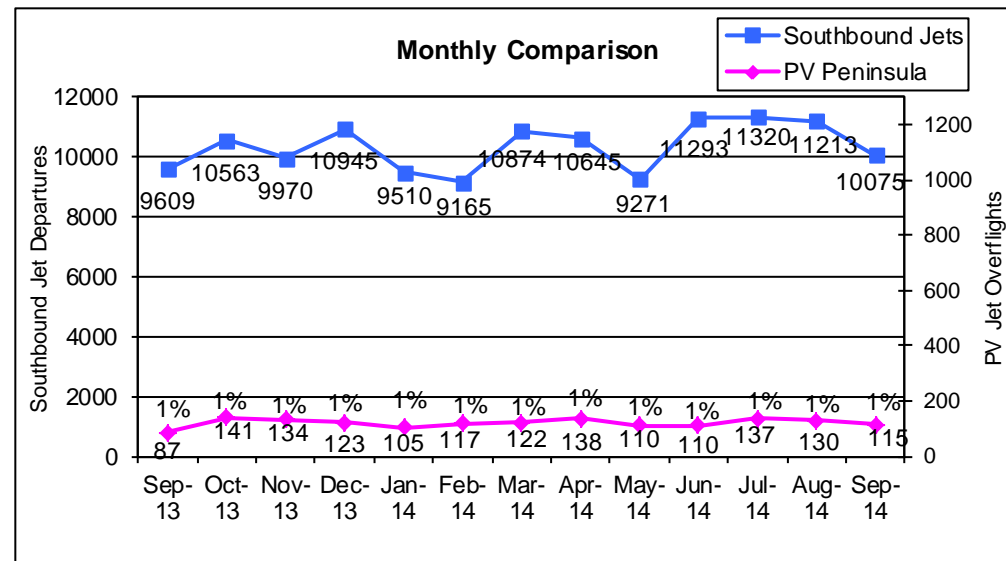
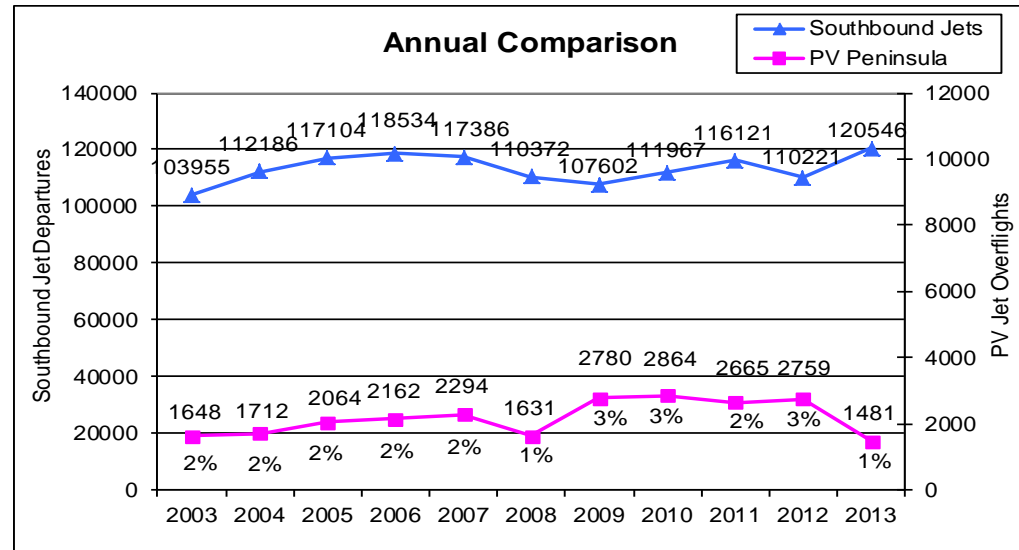
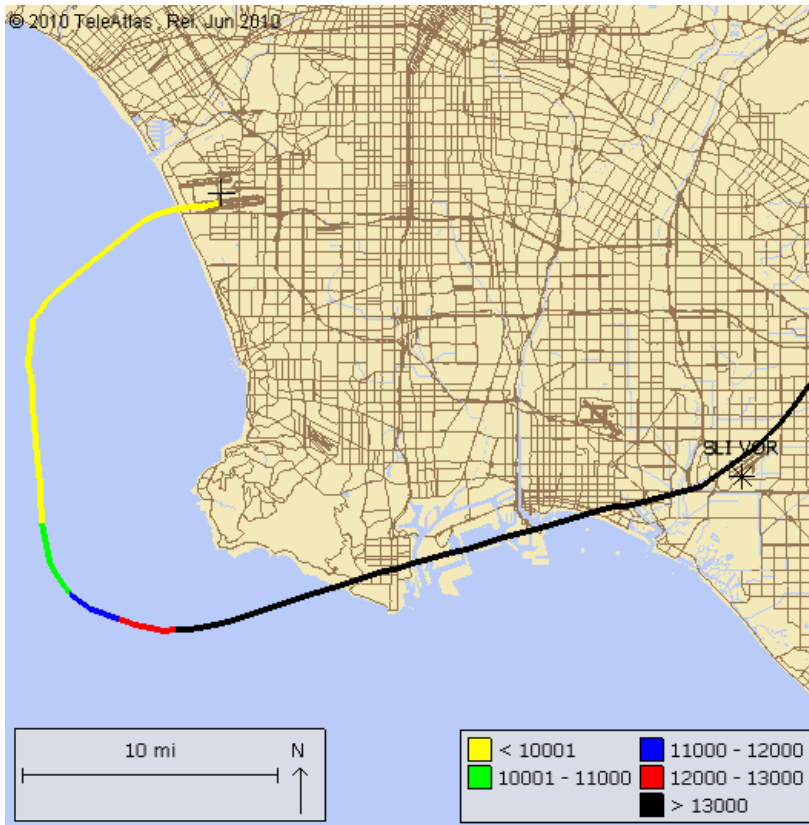


Turboprop Operators



Palos Verdes Peninsula – Jet Overflights

Monitoring southbound jets departing from LAX that overfly Peninsula



Jet Altitudes over PV Peninsula

